

## Marine loading arm – B0034

The B0034 Marine loading arm is designed to serve big tanker ships up to 250.000 DWT and to meet the most stringent specifications and requirements of the petrochemical industry. Its capability has been proven within many years of trouble free operation world-wide.

The B0034 design includes a special support frame for the inboard arm and a rigid link pantograph balancing system with independent counterweights direct linked to the inboard- and outboard arm.

Thus providing that accurate balance is definitely ensured throughout all manoeuvring and connecting positions.

The special design of the inboard arm support structure additionally provides the optimum in regards to operational safety aspects, low weight of the arm and lowest wind loads imposed to the jetty structure.

The advantages in comparison with hose loading facilities are ease of handling, higher availability/ flexibility, less man power and minimum maintenance required by maximal operational safety and minimised operational cost (cost of ownership).

The B0034 is designed for hydraulically operation and can be fitted with the most sophisticated ancillary equipment.

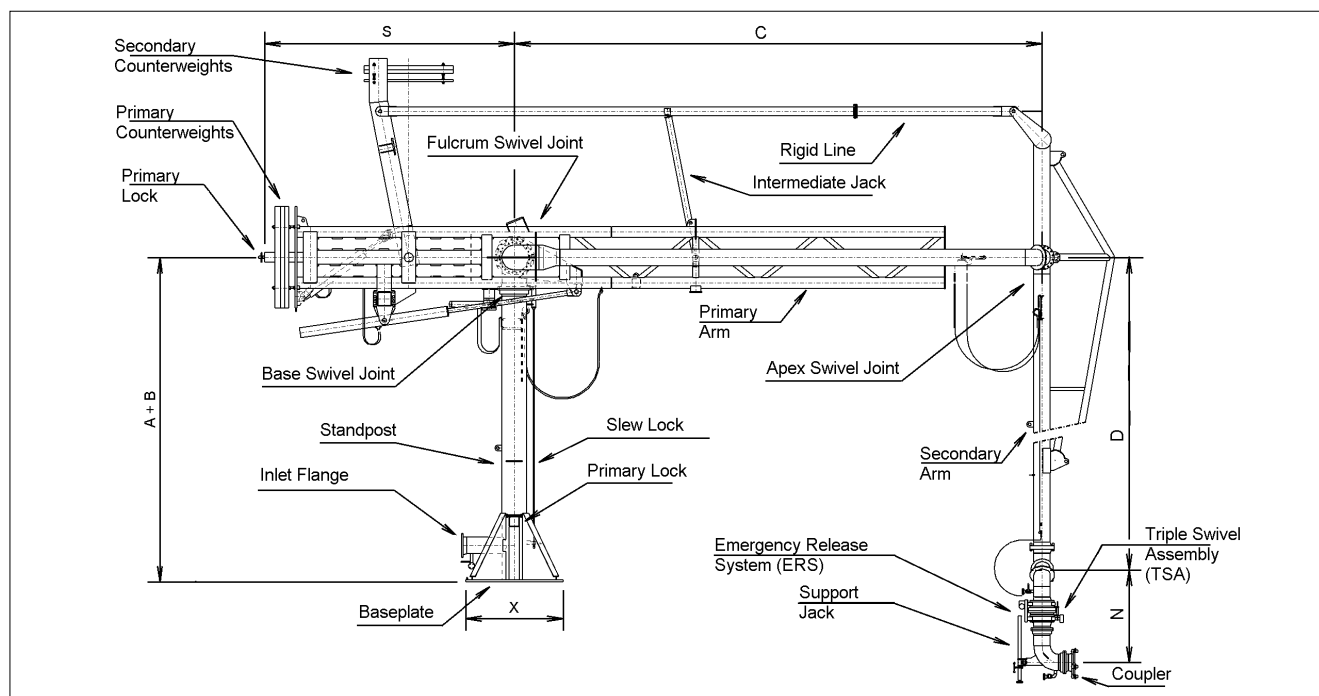
Additional equipment is available.



- sizes from 8" up to 16"
- pressure rates  
from PN 10 up to PN 40
- materials:  
carbon steel, low temperature  
steel, stainless steel
- temperature range:  
from -50 °C up to +200 °C
- customized solutions  
on request
- EMCO high performance  
swivel joints

**B0034**

## Dimensions and technical data



### Technical data (standard) – incl. emergency release system

NB	A + B	X	C	D	N	S	flow rate	weight	bending moment
	mm	mm	mm	mm	mm	mm	m <sup>3</sup> /h	kN	kN/m
8"	7000	1500	10000	10000	1350	6000	1100	190	490
10"	8000	1500	10000	10000	1750	7000	1700	240	760
12"	8000	1500	12000	12000	2100	7000	2500	320	850
16"	8000	1500	13000	13000	2400	7000	4000	380	970

### Design

- Fully balanced with independent counterweights for inboard and outboard arm
- special support frame to reduce mechanical loads imposed to the inboard arm
- light weight design
- swivel joints either as welded-in or flanged version
- for transfer of mineral oil, chemicals and liquefied gases (incl. LNG)
- seals available in Buna-N, Viton, PTFE or any other specific materials

### Accessories

- Envelope warning system
- Drainage connections
- Emergency release system (ERS)
- Hydraulic operation
- Hydraulic quick coupler
- Insulation flange
- Manual quick coupler
- Nitrogen purge line
- Purge line
- Vacuum breaker
- Vapour return line

## Fluid Transfer Division

**EMCO WHEATON**

*A Gardner Denver Product*

SMAILE-PLUSS SIA. LV1007. 79A Slokas str. Riga. Latvia +37129214098

Whilst the content of this leaflet has been edited with the greatest care, we are not liable for any errors and/or omissions. Subject to change without notice.

EMCO WHEATON GmbH  
Emcostraße 2-4 · 35274 Kirchhain · Germany  
Phone +49 6422 84-0 · Fax +49 6422 5100  
www.emcowheaton.com · sales-de@emcowheaton.com